



THIRD FLOOR

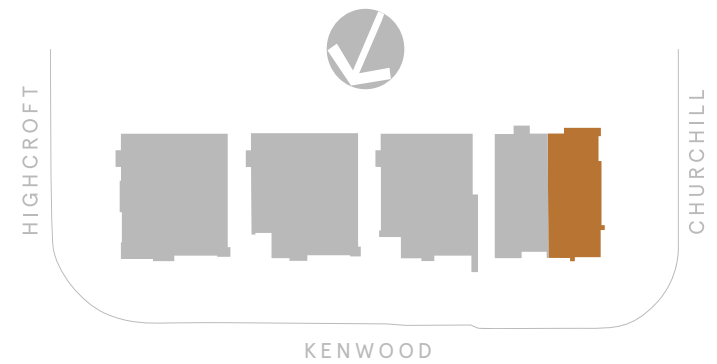
499 CHURCHILL

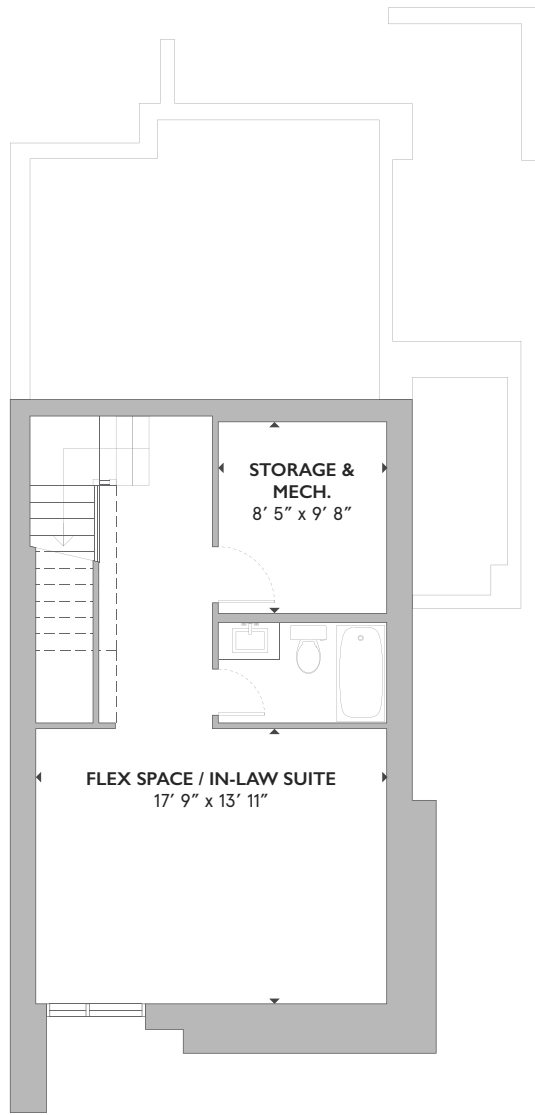
KENWOOD SEMIS

3 BEDROOM / 3.5 BATH

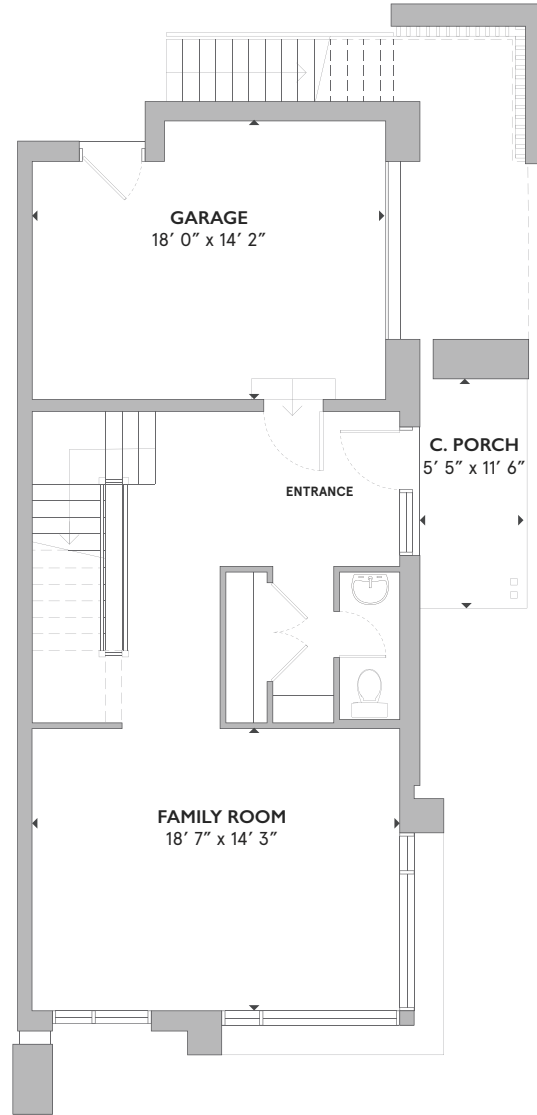
LIVING: 2,383 SF | GARAGE: 287 SF
 BASEMENT: 669 SF | OUTDOOR: 152 SF

- 30' x 74' Corner Lot (Churchill)
- Side-Entry Garage
- Gas Fireplace
- Millwork by Irpinia
- Home Automation
- Flex Room / In-Law Suite with Full Bathroom
- Rear Deck, Lanscaping and Fenced Yard
- 9' Ceilings (Ground & Second Floor)

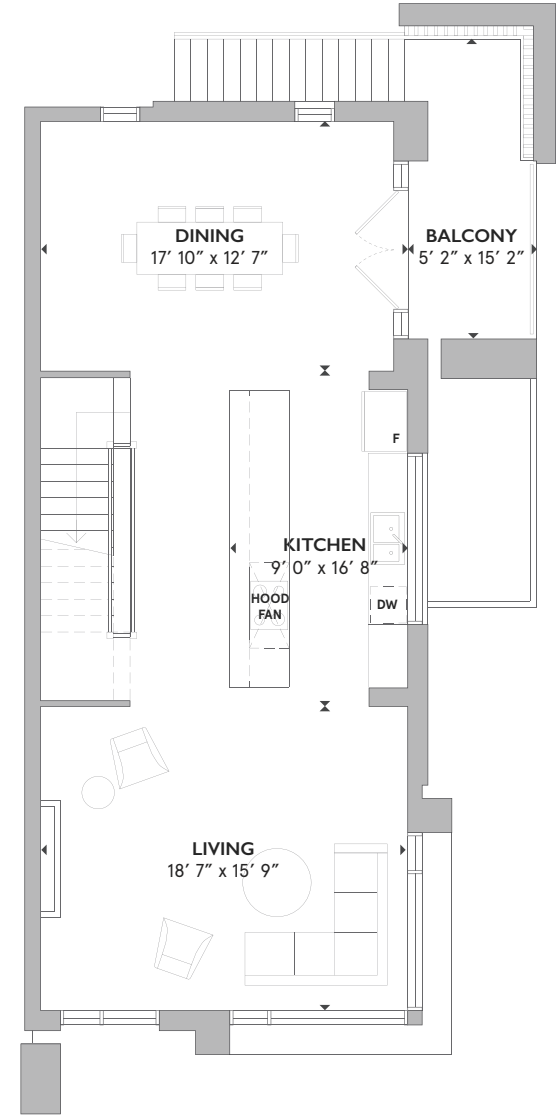




BASEMENT



GROUND FLOOR



SECOND FLOOR



MODBOX | 613.301.7782

Actual usable space may vary slightly from stated floor area. All dimensions are approximate. E. & O.E. Furniture is not included.