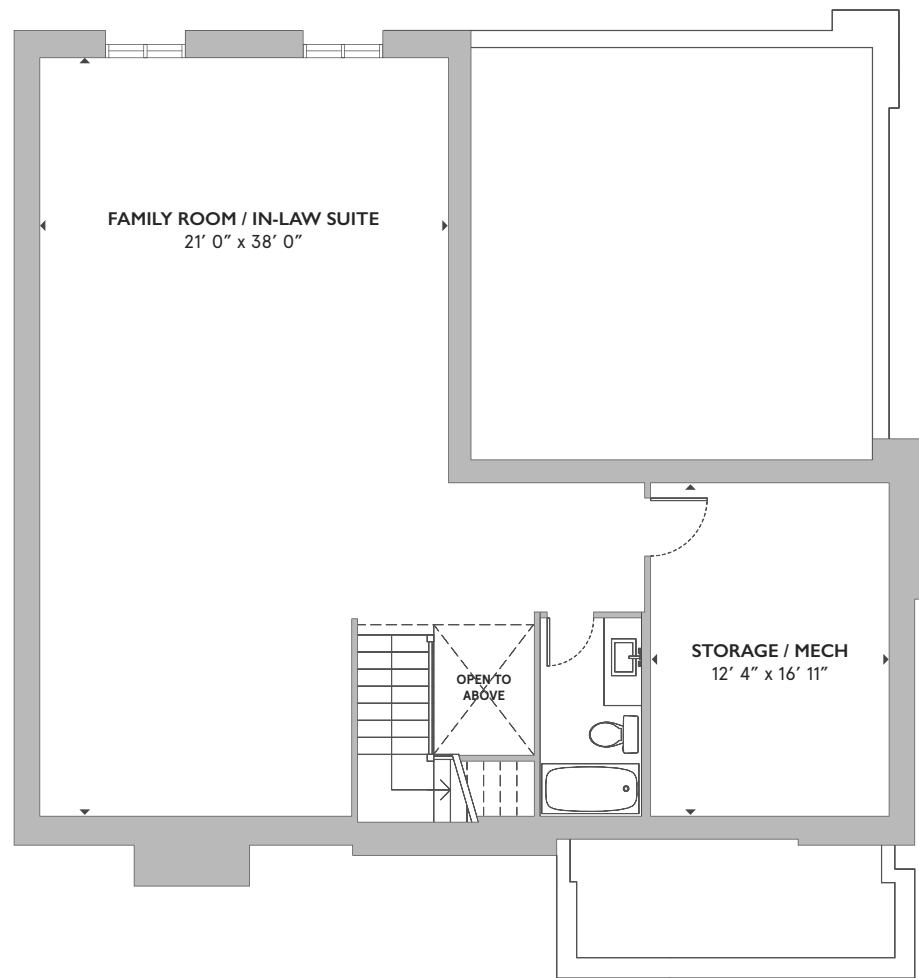
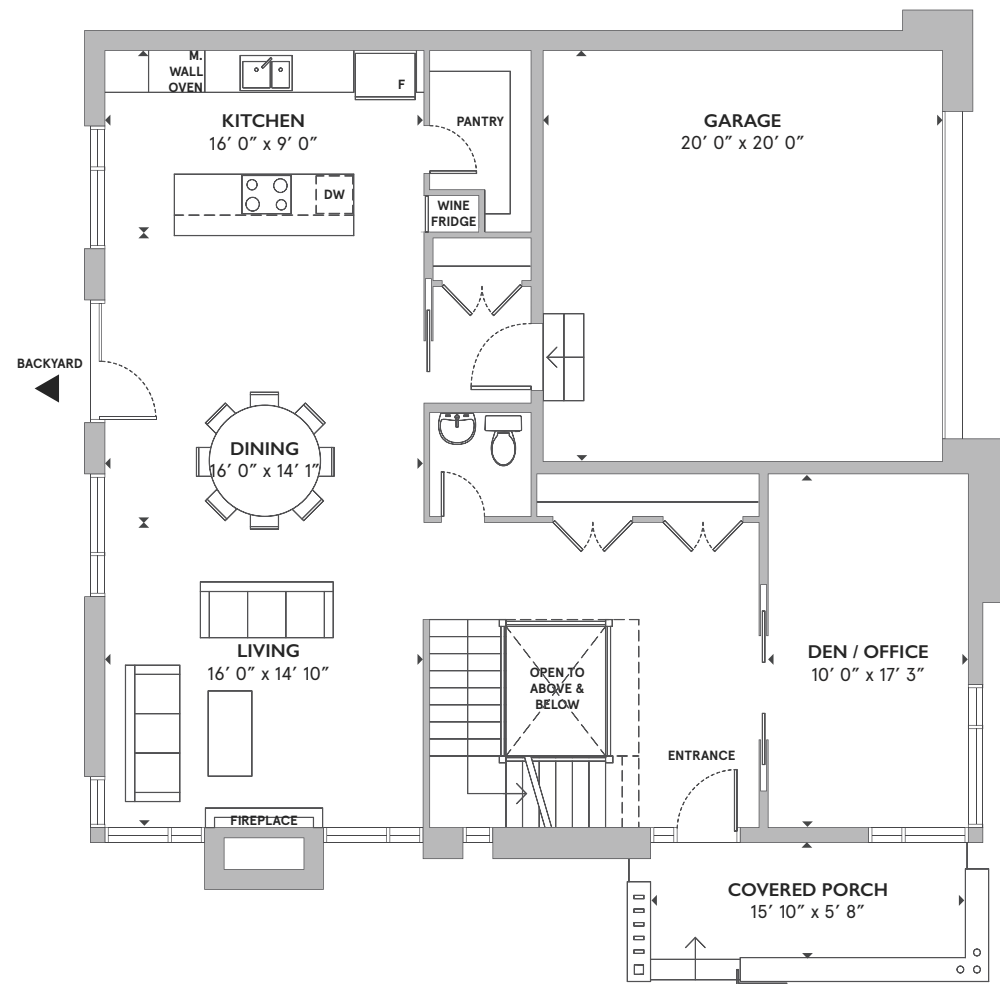




494



BASEMENT



GROUND FLOOR

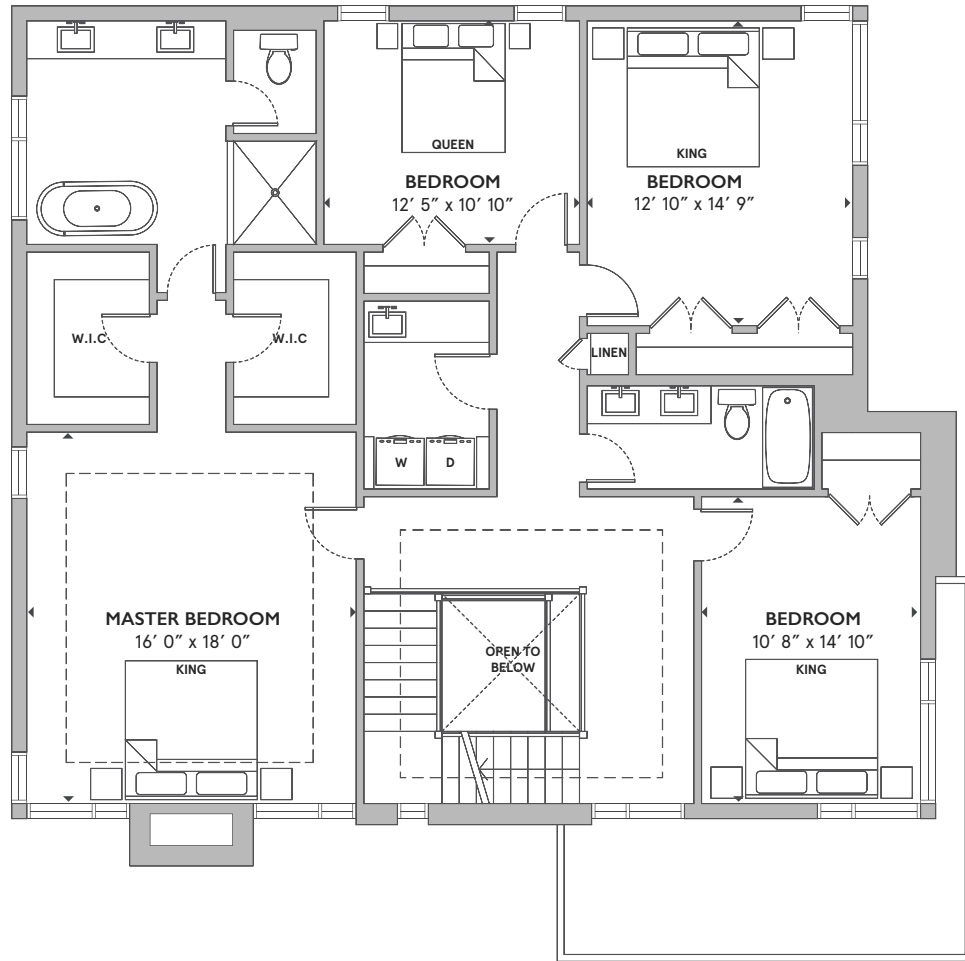


MODBOX | 613.301.7782

Actual usable space may vary slightly from stated floor area. All dimensions are approximate. E. & O.E. Furniture is not included.

4094 HIGHCROFT

KENWOOD SINGLES



SECOND FLOOR

4 BEDROOM + DEN / 3.5 BATH

LIVING: 2,970 SF | GARAGE: 430 SF
 BASEMENT: 1,088 SF | OUTDOOR: 94 SF

- 54' x 73' Corner Lot
- Double-Car Garage
- Gas Fireplace
- Millwork by Irpinia
- Expandable Home Automation
- Family Room / In-Law Suite
- Rear Patio and Private Fenced Yard
- 10' Ceilings Main Floor
- 9' Master Bedroom and Staircase

