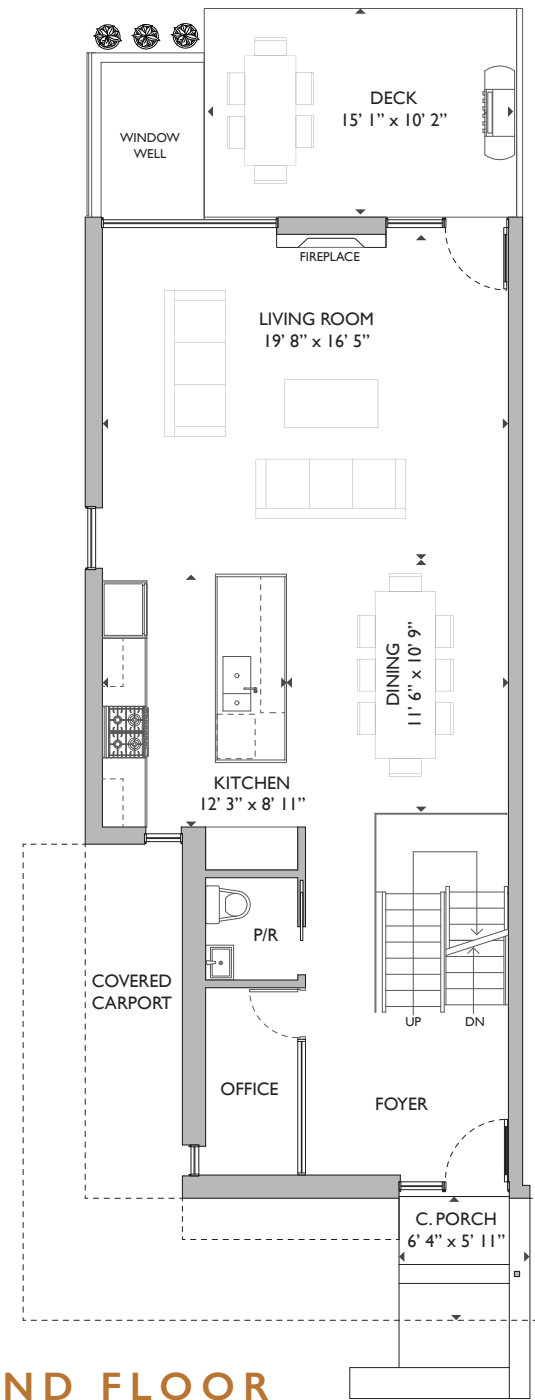


**BASEMENT**

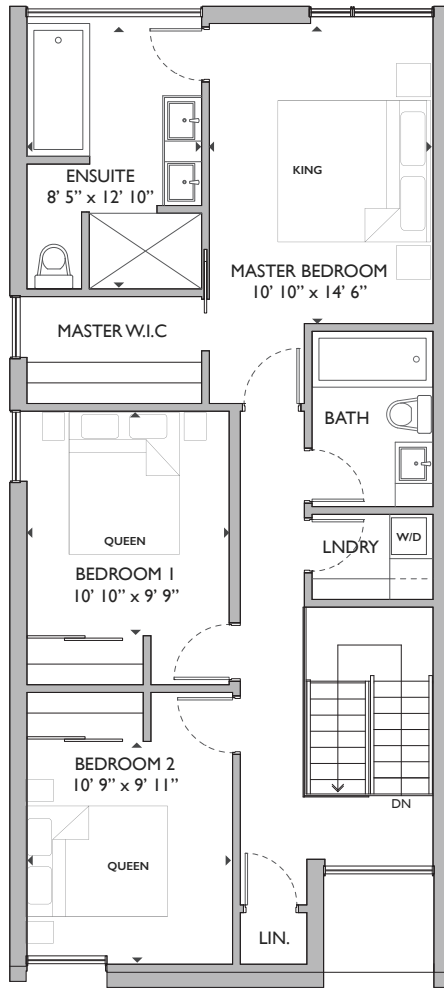


**GROUND FLOOR**



MODBOX | 613.301.7782

Actual usable space may vary slightly from stated floor area. All dimensions are approximate. E. & O.E. Furniture is not included.



**SECOND FLOOR**

### 3 BEDROOM + DEN / 2.5 BATH

LIVING: 1,893 SF | CAR PORT: 143 SF  
 BASEMENT: 900 SF | OUTDOOR: 138 SF

- Car port with space for 2nd vehicle in driveway
- 9 ft ceilings on main and second level
- Choice of glass wall or natural gas fireplace in great/family room
- Millwork by Astro Design Centre
- Family room/ In-law suite
- 5 piece ensuite bath
- Rear terrace, privacy fence, and storage

